

Bass Extension - digitally powered **Galeo Sub dp**

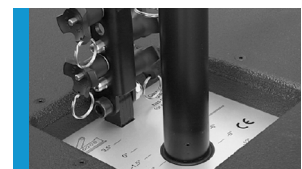


Bass extension for the GALEO system featuring integrated flying hardware for flown array applications and ground stack operation. Horn loaded bandpass technology and newly developed long excursion 18" ND high power drivers combine in the GALEO Sub dp to provide low distortion, long throw, high level bass. The integrated Class D amplifier section provides 2400 Watt power and the DSP controller provides three filter presets, a switchable cardioid mode and several volume presets. The GALEO Sub dp is also available in the ground version (GV), without flying hardware and with additional handles and M20 mounting points.

PRODUCT SPECIFICATIONS

Speaker Components	2 x 18" Nd
Description	Digitally Powered Bass Extension
Amp Power	2400 W AES / 110-230 V
Rated Current	4,2 A @ 230 V
SPL <small>Peak @ 1 m</small>	144 dB
Max. Input Signal	25 dBu
DSP	HDLM FPGA Processing 32 bit floating point
AD / DA	24 bit / 96 kHz
Latency	0,8 ms (analog in to analog out)
Usable Range <small>- 6 dB</small>	36 Hz - 100 / 120 / 140 Hz
Tuning Frequency <small>excursion minimum</small>	43 Hz
Connectors	Neutrik XLR in/out Neutrik PowerCon in/out
Handles	6 x
Rigging / Fittings	M20 on top Wheel board fittings Integrated flying hardware*
Weight	86,0 kg / 75,0 kg (GV) (+ 10,0 kg wheel board)
Size <small>height x width x depth</small>	93,7 x 60,0 x 97,2 cm
Order No.	00405/dp 00405/GV/dp (Ground Version)

*not included in Galeo Sub dp GV



Mounting pole for 2 Galeo tops in a mounting bracket.



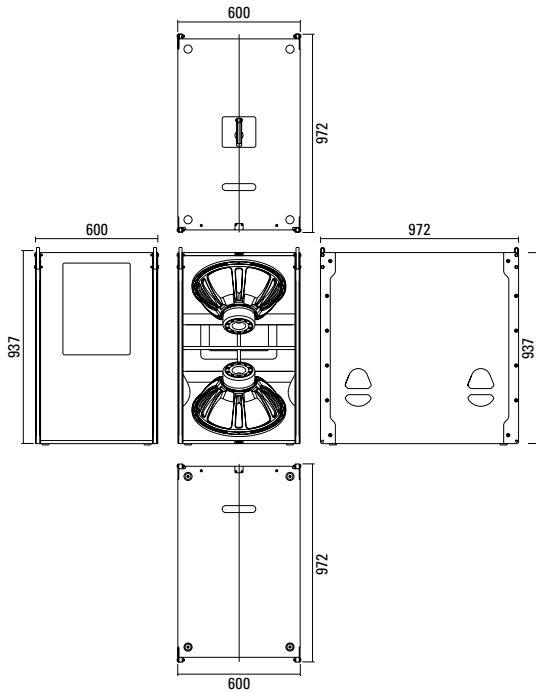
Integrated flying hardware.



Integrated adjuster for setting the angle of the Galeo tops in a ground stack.

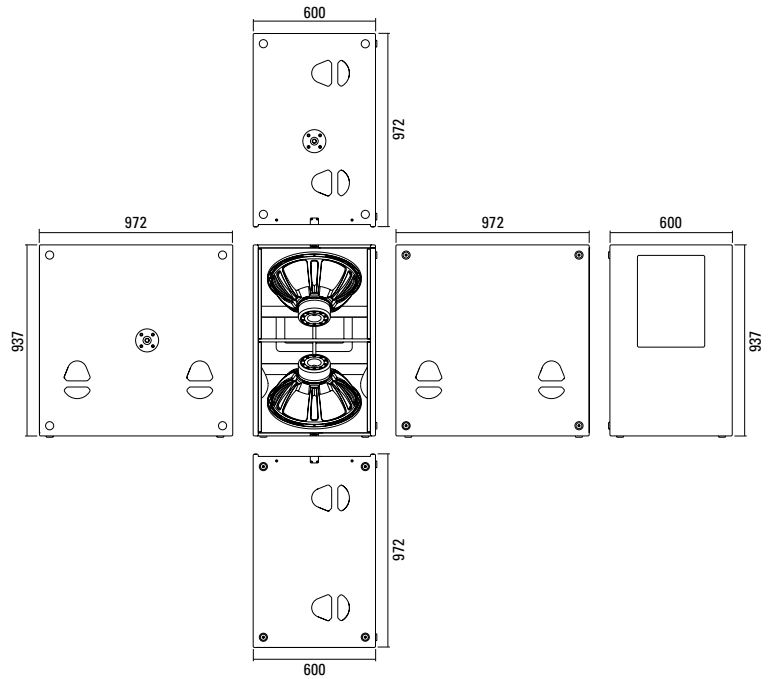
DIMENSIONS

Galeo Sub



Galeo Sub GV

The GALEO Sub is available in the ground version (GV), without flying hardware and with additional handles and M20 mounting points.

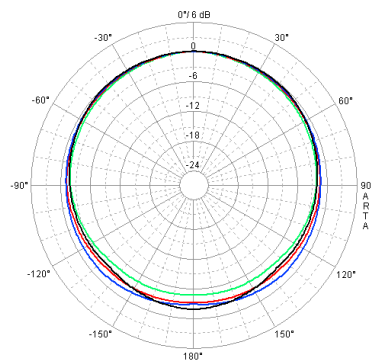


MEASUREMENTS

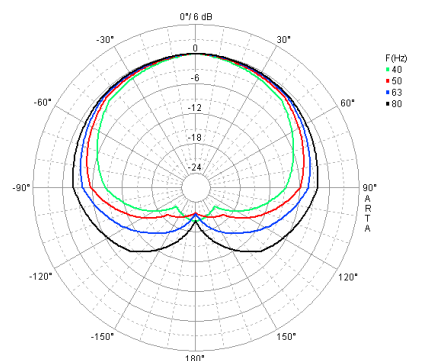
When using three Galeo Subs in a cluster, the middle sub can be faced rearwards. The use of the preset „cardioid“ for the rear facing sub creates a cardioid bass response for the cluster as a whole.

The forward facing Galeo Subs can be either passively or actively driven. The cardioid pattern produces a wide band reduction of around 20 dB to the rear.

Without cardioid mode



With cardioid mode

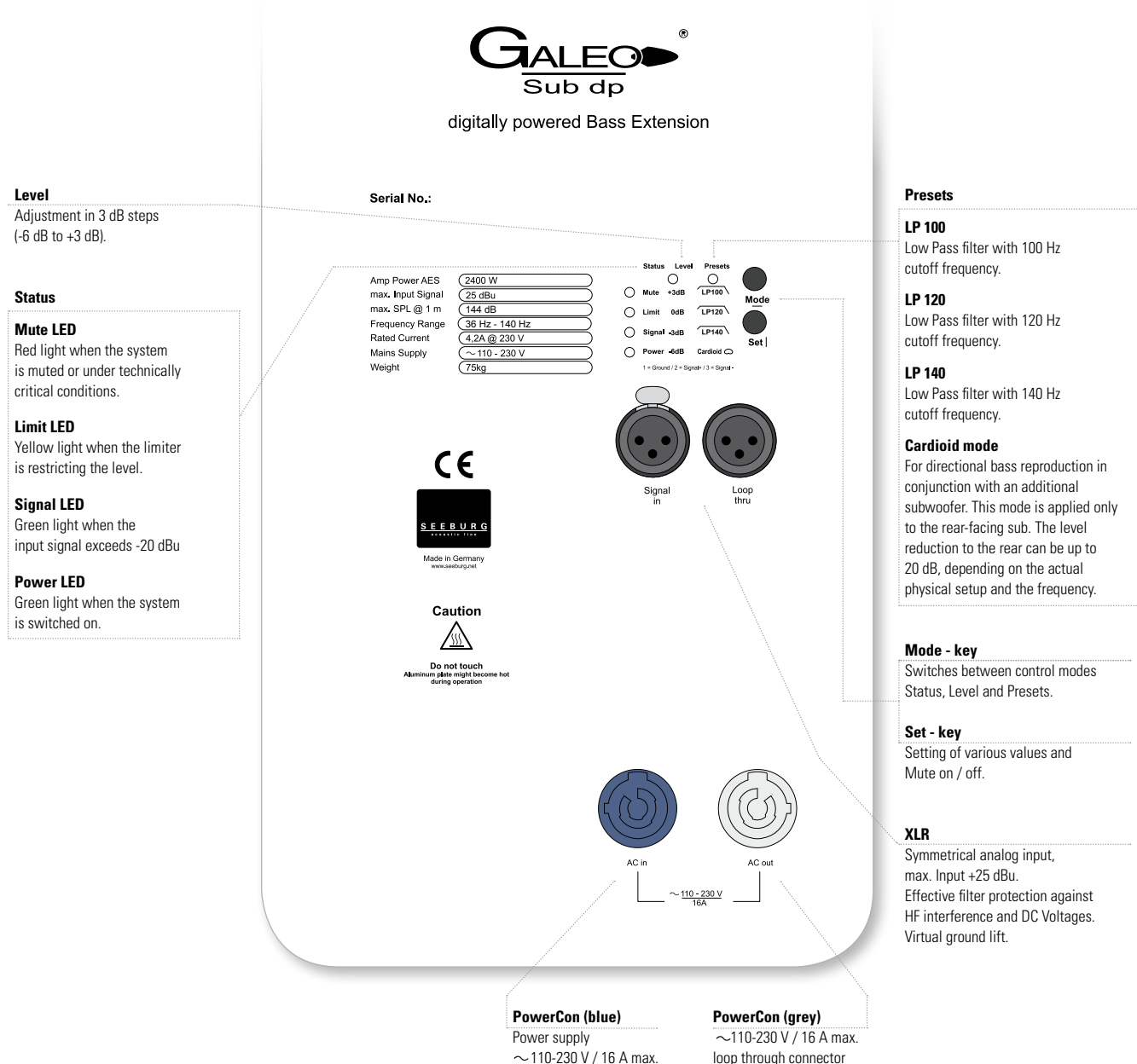


The Galeo Sub dp features integrated digital amplifier electronics with a DSP controller. Various factory-configured presets and volume settings can be selected.

High-grade electronic components from the industrial sector and a first-class circuit design ensure excellent audio quality

with low distortion and a minimal noise floor.

Highly efficient and “intelligent” limiter systems ensure optimum protection against overload, without restricting the possibilities offered by this high-performance sound system.



ACCESSORIES Galeo Sub dp

Flying Frame

for Galeo Sub, incl. accessories

Order No. **01389**



for Galeo Sub, heavy duty,
incl. accessories

Order No. **01389/HD**

Ball Lock Pin

for Galeo flying frame,
9,5 x 25,5 mm

Order No. **01380/gal**



for steel support
for Galeo ground stack,
10,0 x 45,0 mm

Order No. **01380/45**

Speaker Pole

M20, with crank, K&M

Order No. **03023**



Hexagon Grille

for Galeo Sub front grille version,
for replacement, foam behind

Order No. **97022/hex/compl.**



Cover

for Galeo Sub

Order No. **01234**



Wheel Board

for Galeo Sub/ Galeo Sub GV,
stackable, 10 kg

Order No. **01270**



Hybrid Cable System

PowerCon-PowerCon / XLR-XLR

2,5 m Order No. **08462**

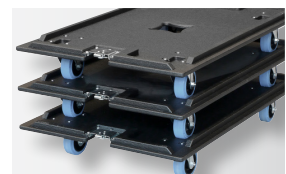
5 m Order No. **08464**

10 m Order No. **08466**

15 m Order No. **08468**



Galeo Sub / 4 x Galeo



Stackable wheel board.

